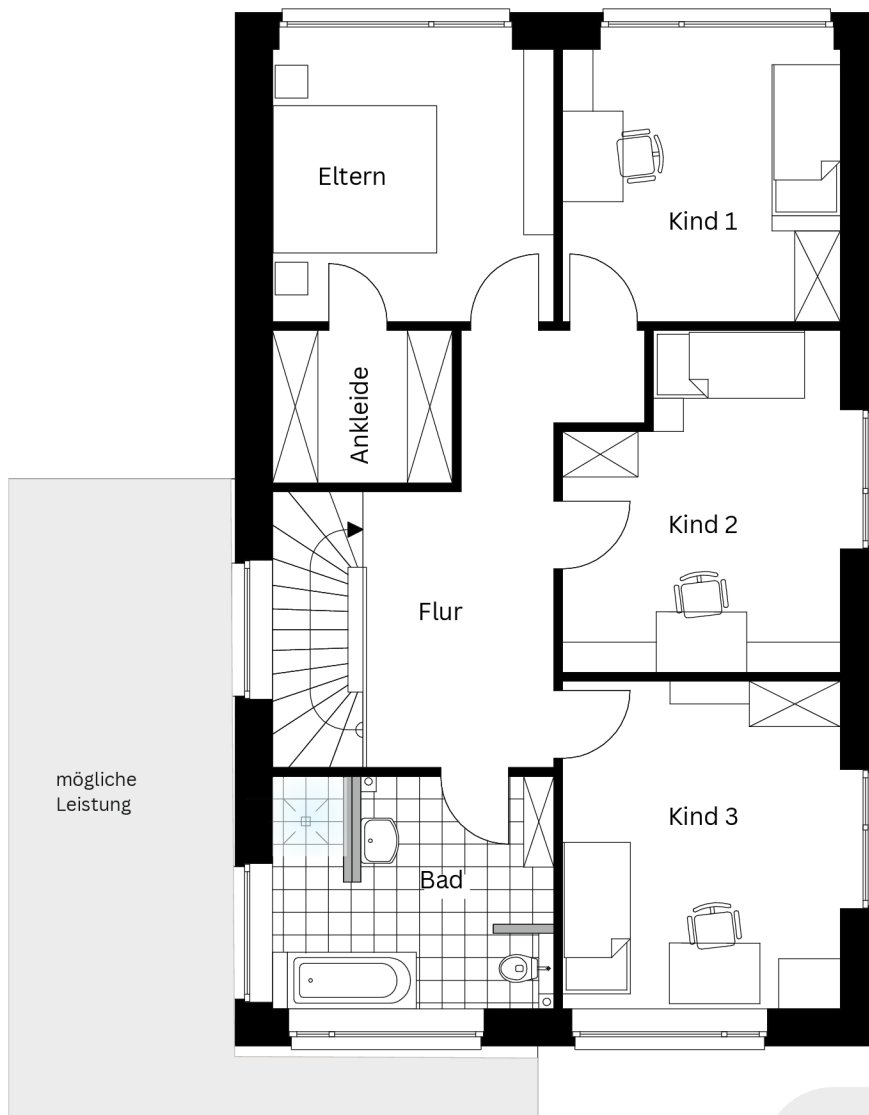
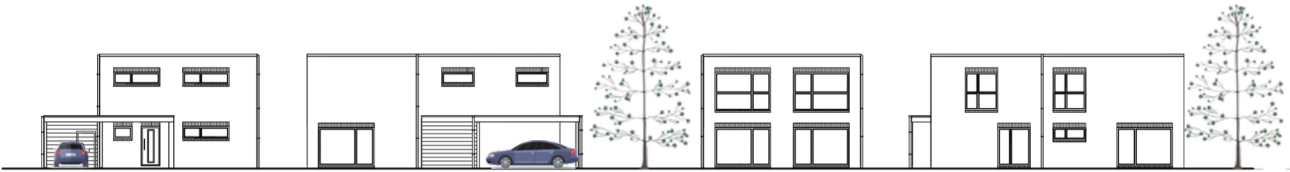


# STADTHAUS 1<sub>plus</sub>



Obergeschoss

Kind 1	13,85 qm
Kind 2	15,27 qm
Kind 3	16,23 qm
Eltern	14,01 qm
Ankleide	4,72 qm
Bad	11,11 qm
Flur	13,11 qm
<b>OG gesamt</b>	<b>88,30 qm</b>